



Hong Kong  
**29er**  
Class Association

## 29ER HONG KONG OPEN 2017

### HONG KONG, HKSAR

26 to 29 DECEMBER 2017

The Organizing Authority is the Royal Hong Kong Yacht Club (RHKYC)  
in conjunction with the Hong Kong 29er Class Association.

## SAILING INSTRUCTIONS

*The notation '[NP]' in a rule in the Sailing Instructions (SIs) means that a breach of that rule will not be grounds for a protest by a boat. This changes RRS 60.1(a).*

*The notation '[DP]' in a rule in the SIs means that the penalty for a breach of that rule may, at the discretion of the protest committee, be less than disqualification.*

### 1 RULES

- 1.1 The regatta will be governed by the rules as defined in *The Racing Rules of Sailing* (RRS).
- 1.2 The HKSF Prescriptions set out in Attachment A to these SIs shall apply.
- 1.3 RRS 63.1 will be changed as follows: add to the list of rules in RRS 63.1 the rule 64.4(b).
- 1.4 If there is a conflict between languages the English text will take precedence.
- 1.5 Where there is conflict with the Notice of Race (NoR), the SIs will prevail except that neither shall change nor alter any Class Rules. This changes RRS 63.7.
- 1.6 This event is designated a Clean Regatta by the Sailors for the Sea Organization, a nonprofit organization that educates and empowers boaters to protect and restore our oceans and coastal waters. Our goal is Silver Level.

### 2 NOTICES TO COMPETITORS

Notices to competitors will be posted on the official notice board located at the 2/F of the RHKYC Middle Island clubhouse.

### 3 CHANGES TO SAILING INSTRUCTIONS

Any change to the SIs will be posted not less than 30 minutes before flag D is displayed (SI 4.2), except that any change to the schedule of races will be posted by 20:00 on the day before it will take effect.

### 4 SIGNALS MADE ASHORE

- 4.1 Signals made ashore will be displayed on the flagpole on the RHKYC Middle Island hardstanding.
- 4.2 Flag D will one sound means: 'The warning signal will be made not less than 60 minutes after flag D is displayed. Boats shall not launch until this signal is made.' [NP][DP]

### 5 FORMAT OF RACING

The regatta will consist of a single series of races.

**6 SCHEDULE**

6.1 The schedule will be:

<b>Date</b>	<b>Event</b>
Tuesday 26 December 2017	Registration 14:00 – 17:00, RHKYC Middle Island
Wednesday 27 December 2017	Coaches' Meeting with Organising Authority 08:30, RHKYC Middle Island 4 races
Thursday 28 December 2017	4 races
Friday 29 December 2017	4 races Prize Giving After racing, RHKYC Middle Island

6.2 The scheduled time of the warning signal for the first race each day is 10:55.

6.3 To alert boats that a race or sequence of races will begin soon, the orange starting line flag will be displayed with one sound at least two minutes before a warning signal is made.

6.4 On Friday 29 December 2017 no warning signal will be made after 16:00. In the case of one or more postponements, general recalls or abandonments when the initial warning signal was made prior to 16:00, the race committee may display subsequent warning signals after this time.

**7 CLASS FLAGS**

The class flag will be a yellow flag.

**8 RACING AREAS**

8.1 Attachment B shows the approximate location of the racing areas.

8.2 The racing area to be used for the first race on a day will be posted before flag D (SI 4.2) is displayed.

**9 THE COURSES**

9.1 The diagram in Attachment C shows the courses, including the course signals, the order in which marks are to be passed, and the side on which each mark is to be left.

9.2 No later than the warning signal, the race committee signal vessel will display the approximate compass bearing of the first leg.

9.3 Courses will not be shortened. This changes RRS 32.

**10 MARKS**

10.1 Marks 1, 2s and 2p will be orange inflatable buoys.

10.2 New marks, as provided in SI 13, will be inflatable buoys with pink covers.

10.3 Starting marks and finishing marks will be race committee vessels.

**11 THE START**

11.1 The starting line will be between staffs displaying orange flags on the starting marks.

11.2 A boat that does not start within 4 minutes after her starting signal will be scored Did Not Start without a hearing. This changes RRS A4 and A5.

**12 CHANGE OF THE NEXT LEG OF THE COURSE**

To change the next leg of the course, the race committee will lay a new mark (or move the finishing line) and remove the original mark as soon as practicable. When in a subsequent change a new mark is replaced, it will be replaced by an original mark.

**13 THE FINISH**

The finishing line will be between staffs displaying orange flags on the finishing marks.

**14 PENALTY SYSTEM**

14.1 RRS 44.1 is changed so that the Two-Turns Penalty is replaced by the One-Turn Penalty.

14.2 A boat that has taken a penalty or retired according to RRS 44.1 and SI 14.1 shall complete an acknowledgement form at the race office within the protest time limit. [NP][DP]

14.3 RRS Appendix P will apply with the following changes. The penalty under RRS P2.1 shall be the One-Turn Penalty. RRS P2.2 is changed so that it will apply to any penalty after the first one. RRS P2.3 will not apply.

**15 TIME LIMITS AND TARGET TIMES**

15.1 Time limits and target times are as follows:

Time limit	Mark 1 time limit	Target time
45 minutes	15 minutes	30 minutes

15.2 If no boat has passed Mark 1 within the Mark 1 time limit or if no boat has finished within the Time limit the race will be abandoned. Failure to meet the Target time will not be grounds for redress. This changes RRS 62.1(a).

15.3 Boats failing to finish within 15 minutes after the first boat sails the course and finishes will be scored Did Not Finish without a hearing. This changes RRS 35, A4 and A5.

**16 PROTESTS AND REQUESTS FOR REDRESS**

16.1 Protest forms are available at the protest desk located at the 2/F of the RHKYC Middle Island clubhouse. Protests and requests for redress or reopening shall be delivered there within the appropriate time limit.

16.2 For each fleet the protest time limit is 90 minutes after the last boat has finished the last race of the day, after SI 15.3 has been applied to that race, or the race committee signals no more racing today, whichever is later.

16.3 Notices will be posted no later than 30 minutes after the protest time limit to inform competitors of hearings in which they are parties or named as witnesses. Hearings will be held in the protest room, located at the 2/F of the RHKYC Middle Island clubhouse.

16.4 Notices of protests by the race committee, technical committee or protest committee will be posted to inform boats under RRS 61.1(b).

16.5 A list of boats that, under SI 14.3, have been penalized for breaking RRS 42 will be posted.

16.6 On the last scheduled day of racing a request for reopening a hearing shall be delivered:

- (a) within the protest time limit if the requesting party was informed of the decision on the previous day; or
- (b) no later than 30 minutes after the requesting party was informed of the decision on that day. This changes RRS 66.

16.7 On the last scheduled day of racing a request for redress based on a protest committee decision shall be delivered no later than 30 minutes after the decision was posted. This changes RRS 62.2.

**17 ARBITRATION**

RRS Appendix T will apply.

**18 SCORING**

18.1 Four races are required to be completed to constitute the 29er Hong Kong Open 2017.

18.2 (a) When from four to seven races have been completed, a boat's series score will be the total of her race scores excluding her worst score.

(b) When eight or more races have been completed, a boat's series score will be the total of her race scores excluding her two worst scores.

18.3 Any non-excludable points under SI 19.2(a) will be added to a boat's regatta score.

18.4 To request correction of an alleged error in posted race or series results, a boat shall complete a scoring enquiry form available at the race office.

**19 SAFETY REGULATIONS**

19.1 Competitors shall wear personal flotation devices adequate for the conditions at all times whilst afloat, except briefly while adjusting clothing or personal equipment. Flag Y will not be displayed. This changes RRS 40 and Race Signals. [NP][DP]

19.2 **Check-out and check-in:** The requirements of these instructions are specified for the safety of competitors.

(a) Each helm and crew shall check out each day before launching by scanning their RFID wristband at the RHKYC Middle Island launching ramp. After returning each helm and crew shall check in by scanning their RFID wristband at the RHKYC Middle Island launching ramp within the protest time limit. Competitors shall wear their wristbands at all times whilst afloat. The penalty per breach of SI 19.2(a) shall be 2 penalty points applied to the competitor's boat's score. The penalty points will be non-excludable. This changes RRS 63.1. [NP]

(b) Wristbands will be issued at registration (1 per competitor) and shall be returned to the check-in point on the last scheduled day of racing. The RFID chip in the wristband corresponds with the competitor's personal details in the regatta entry system. Therefore the wristband is strictly personal and shall not be exchanged with other sailors. Replacement of lost wristbands will result in a non refundable fee of HK\$100.

19.3 A boat that retires from a race shall notify the race committee as soon as possible and shall complete the relevant form available at the race office. [NP][DP]

19.4 Under all circumstances coaches and other support boats are expected to assist any boat in distress. [NP][DP]

19.5 When the race committee displays flag V with repetitive sounds, all official and support boats shall monitor VHF channel 72 for search and rescue instructions. [NP][DP]

19.6 In the event of an emergency all boats shall follow the safety plan which will be distributed to coaches at the Coaches' Meeting.

**20 REPLACEMENT OF CREW AND EQUIPMENT**

20.1 Substitution of competitors will not be allowed without prior written approval of the race committee. Requests shall be made on the relevant form available at the race office. [NP][DP]

20.2 Substitution of damaged or lost equipment will not be allowed unless approved in writing by the race committee. Requests for substitution shall be made to the race committee at the first reasonable opportunity. [NP][DP]

20.3 Substitution of damaged or lost equipment may be permitted provided that the relevant form has been completed at the race office and both the damaged and the substituting equipment has been inspected by the race committee.

- 20.4 If the substitution was made on the water between races, both the damaged and the substituting equipment shall be presented to the race committee after the end of the day's racing. The substitution is subject to the approval of the race committee given retrospectively. [NP][DP]

## 21 EQUIPMENT AND MEASUREMENT CHECKS

- 21.1 A boat or equipment may be inspected at any time for compliance with the class rules and SIs.  
21.2 Only one set of sails and one forestay may be used during the regatta. [NP]

## 22 ADVERTISING

Boats may be required to display event advertising supplied by the organising authority. If this rule is broken, World Sailing Regulation 20.9.2 applies. [NP][DP]

## 23 OFFICIAL BOATS

Official boats will be marked as follows:

Boat	Flag
Race committee	White flag, black RC
Protest committee	White flag, black JURY
Safety	White flag, black 1, 2, 3 etc.
Media	White flag, black MEDIA

## 24 SUPPORT BOATS [NP][DP]

- 24.1 Support boats shall register with the organizing authority at the race office during the registration period. All support boats shall comply with local legislation and event and Class support boat regulations.
- 24.2 Coaches shall complete registration and pay the appropriate fee as per NoR 4.2.
- 24.3 Support boats shall clearly display on a flag or outboard cover the three national letter code of their World Sailing Member National authority at all times whilst afloat.
- 24.4 If called upon, support boats will be required to act as rescue boats.
- 24.5 Team leaders, coaches and other support personnel shall stay more than 50m outside areas where boats are racing from the time of the preparatory signal until all boats have finished or retired or the race committee signals a postponement, general recall or abandonment. This instruction is not applicable when assisting a boat in distress.
- 24.6 Team leaders, coaches and other support personnel shall carry and operate whilst afloat a marine band VHF radio capable of transmitting and receiving the normal international channels.

## 25 TRASH DISPOSAL [NP][DP]

Disposal of trash in the water is strictly prohibited. Trash may be placed aboard support or official boats.

## 26 BERTHING [NP][DP]

Boats shall be kept in their assigned places in the boat park.

## 27 RADIO COMMUNICATION [NP][DP]

Except in an emergency, a boat that is racing shall not make voice or data transmissions and shall not receive voice or data communication that is not available to all boats.

**28 PRIZES**

- 28.1 The Hong Kong 29er Class Perpetual Trophy will be presented to the top Hong Kong boat.
- 28.2 Prizes will be awarded to the first three boats overall and to the top female team.
- 28.3 Other prizes will be awarded at the discretion of the organizing authority.

**29 DISCLAIMER OF LIABILITY**

Competitors participate in the regatta entirely at their own risk. See RRS 4, Decision to Race. The organising authority will not accept any liability for material damage or personal injury or death sustained in conjunction with or prior to, during, or after the regatta.

**30 INSURANCE**

Each participating boat shall be insured with valid third-party liability insurance with a minimum cover of \$5,000,000 HKD per incident or the equivalent.

**31 RIGHTS TO USE NAME AND LIKENESS**

- 31.1 By participating in this event, competitors automatically grant to the organizing authority and the event sponsors the right, in perpetuity, to make, use, and show, at their discretion, any photography, audio and video recording, and other reproductions of them made at the venue or on the water from the time of their arrival at the venue, until their final departure, without compensation.
- 31.2 A drone may be flown to record video and still imagery primarily for regatta advertising and promotion.

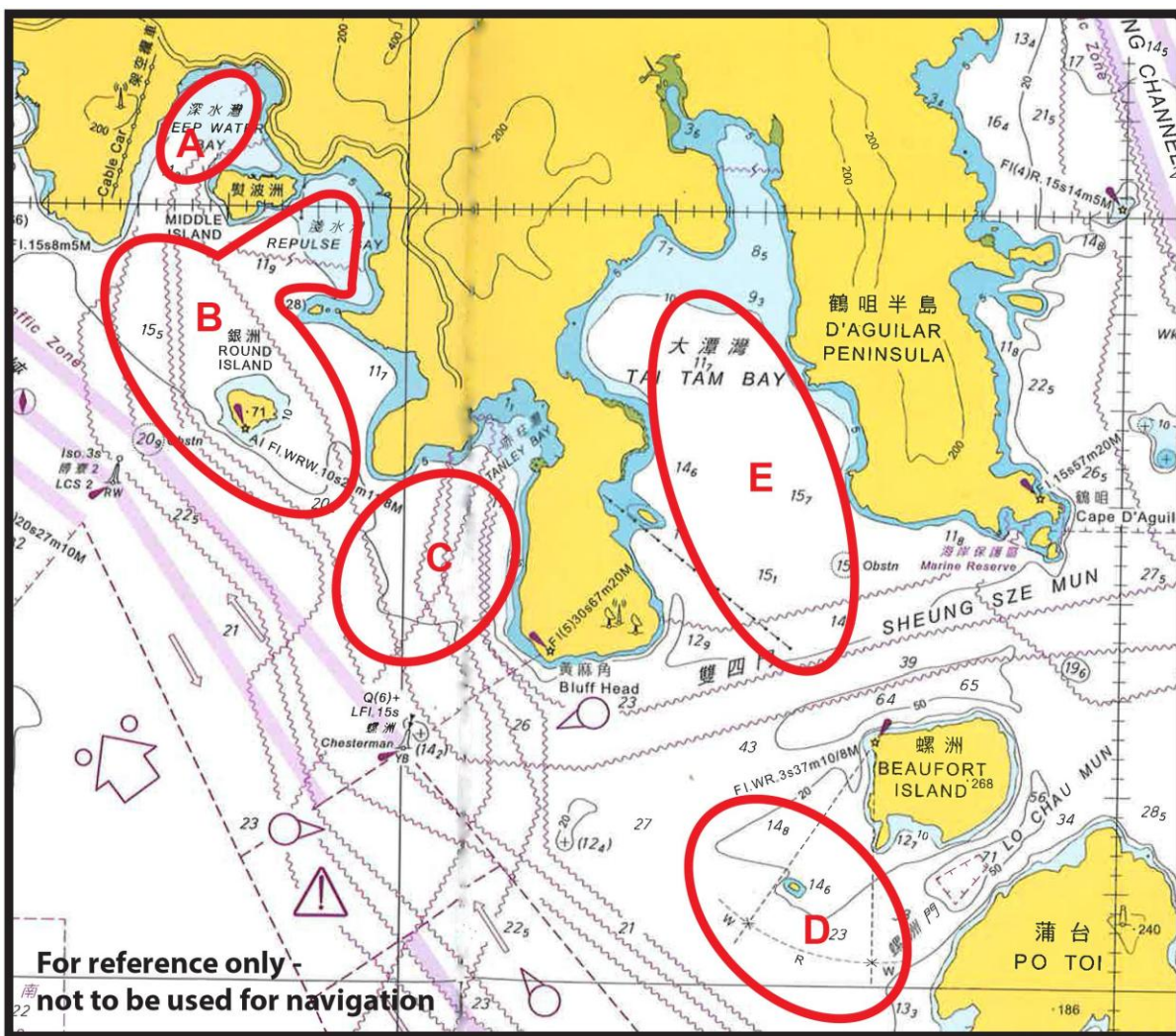
**ATTACHMENT A – HKSF PRESCRIPTIONS**

**Rule Prescription**

**67 Damages**

- 1 No claim for damages arising from breaches of these rules or the sailing instructions shall be adjudicated upon by any race committee or appeal authority, but shall be subject to the jurisdiction of the courts.
- 2 A boat which acknowledges infringing a rule by retiring or taking a penalty does not thereby admit liability for damage.
- 3 The findings of fact and decisions of protest committees shall be relevant only to the purposes of the World Sailing Racing Rules of Sailing and shall not be referred to in any proceedings for damages without the written consent of the protest committee.
- 4 Notwithstanding 3 above, any owner of a boat may be liable for damages arising from a breach of these rules and may be subject to limitations under the Merchant Shipping Ordinance or related ordinances or regulations of the laws of Hong Kong.

**ATTACHMENT B – APPROXIMATE LOCATION OF RACING AREAS**



**ATTACHMENT C – COURSE DIAGRAM**

COURSE: WINDWARD / LEEWARD with reaching finish	
Signal	Mark Rounding Order
L2	Start – 1 – 2s/2p – 1 – 2p – Finish
L3	Start – 1 – 2s/2p – 1 – 2s/2p – 1 – 2p – Finish

**Notes**

Mark 1 shall be rounded to port. At gate 2s/2p, boats shall pass between the marks and round either mark. The gate may be replaced by a single mark which shall be rounded to port.

